

# ACE

## STAGE ELECTRIC HOIST

ACE 系列舞台电动葫芦



型号/MODEL: ACE 1000kg 2Br

起升速度/LIFTING SPEED: 4M/MIN

起升重量/SAFE WORKING LOAD: 1000KG

# CONTENTS

目录

**产品简介 .....3..****技术数据 .....4..**

标准配置 ..... 4

选装配置 ..... 4

线形图 ..... 5

产品爆炸图 ..... 8

**电器数据 .....9..****PRODUCT INTRODUCTION .....3****TECHNICAL DATA .....4..**

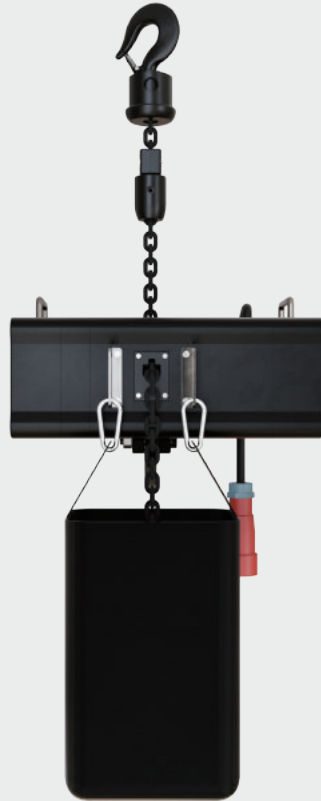
STANDARD VERSION ..... 4

OPTIONAL CONFIGURATION ..... 4

LINE GRAPH ..... 5

PRODUCTS EXPLOSION VIEW ..... 8

**ELECTRICAL DATA .....9..**



Innovative chains side-guiding-out design for quiet and steady operation.

全新的侧出链设计可以保证链条安静而平稳运行。

360° swivel hooks made of forged alloy steel. Anti-detaching device is equipped.

吊钩采用合金钢锻造，设有防脱钩装置，可360度旋转。

Built-in mechanical overload protection clutch to avoid collision and overload damage.

内置式机械超载安全离合器防止超载或是冲顶对葫芦本体及链条带来的损害。

Lifting sprocket is made of special alloy with 5 pockets and double sides bearing. Steady and quiet operation.

起重链轮由特种合金钢制造，五链窝设计采用双侧轴承，运行平稳安静。

The gearbox is formed by die-casting high-strength aluminum alloy, light and strong with higher strength and better corrosion resistance.

齿轮箱采用高强度铝合金压铸一体成型，轻巧坚固、强度更高、耐腐蚀性能好。

Motor with an aluminum alloy tensile shell, unique heat dissipation function, suitable for high-frequency operation, and its protection level is IP65.

电机采用铝合金拉伸外壳，独有散热功能适应高频率作业，防护等级IP66。

Simple electromagnetic brake design, no failure of the brake coil, and no need to replace the brake disc.

电磁刹车精简设计，不会出现刹车线圈故障，也不需更换刹车盘。

## 标准配置

- 设备型号：ACE 1000kg 2Br
- 起重量：1000 Kg
- 提升速度 (m/min)：4
- 直接控制：220-440V、3ph、50/60Hz (见图5,P9)
- 供电电缆：1m电源线，带CEE-16A/4芯
- 链条尺寸 EN818-7 (mm)：7.1\*21
- 链条重量 (Kg/m)：1.1
- 链条等级：G80
- 链条表面：电泳
- 导链器：带有5个链窝链轮的精密导链器
- 链条行数：1
- 链条袋：1纺织链条袋，可拆卸，≤30米
- 满载噪音 (dB)：≤65
- 制动器：1个直流制动
- 吊钩：1个下 (可旋转)
- 悬挂方式：吊钩悬挂
- 安装方式：自爬或固定
- 塑料手柄：无
- 防护等级：IP66
- 不含链条的重量 (kg)：44
- 电机功率 (KW)：1.0
- 电流消耗 (A)：3.7
- 机械等级/FEM9.511：1Bm/25%ED
- 颜色：黑色，色号RAL 9005 哑光
- 离合器：获得专利的摩擦离合器，用于过载保护

## 选装配置

- 链条 选装 G100链条
- 悬挂方式 选装 吊钩 (见图2,P6)

## STANDARD VERSION

- Model : ACE 1000kg 2Br
- SWL acc.: 1000 Kg
- Lifting speed (m/min) : 4
- High voltage directly control :  
220-440V、3ph、50/60Hz (See Figure5, P9)
- Power supply cable : 1m power supply cable, CEE-16A/4 cord
- Chain acc. EN818-7 (mm) : 7.1\*21
- Chain net weight (Kg/m) : 1.1
- Grade of chain : G80
- Chain surface : Electrophoresis
- Chain Guide : Precise chain guide with 5-pocket chain wheel
- Chain falls : 1
- Chain bag : 1 textile chain bag, detachable, ≤30 meters
- Full load noise level (db) : ≤65
- Brake: 1 DC brake
- Load hook: 1-fall / turnable
- Suspension: Hook suspension
- Mounting position: Climbing & stationary
- Plastic handles: None
- Protection level: IP66
- Weight without chain (kg):44
- Motor power (KW) : ca.1.0
- Current consumption (A): ca.3.7
- Mechanism class /FEM9.511: 1Bm/ 25% ED
- Color:black, RAL 9005 matt
- Clutch : Patented friction clutch for overload protection

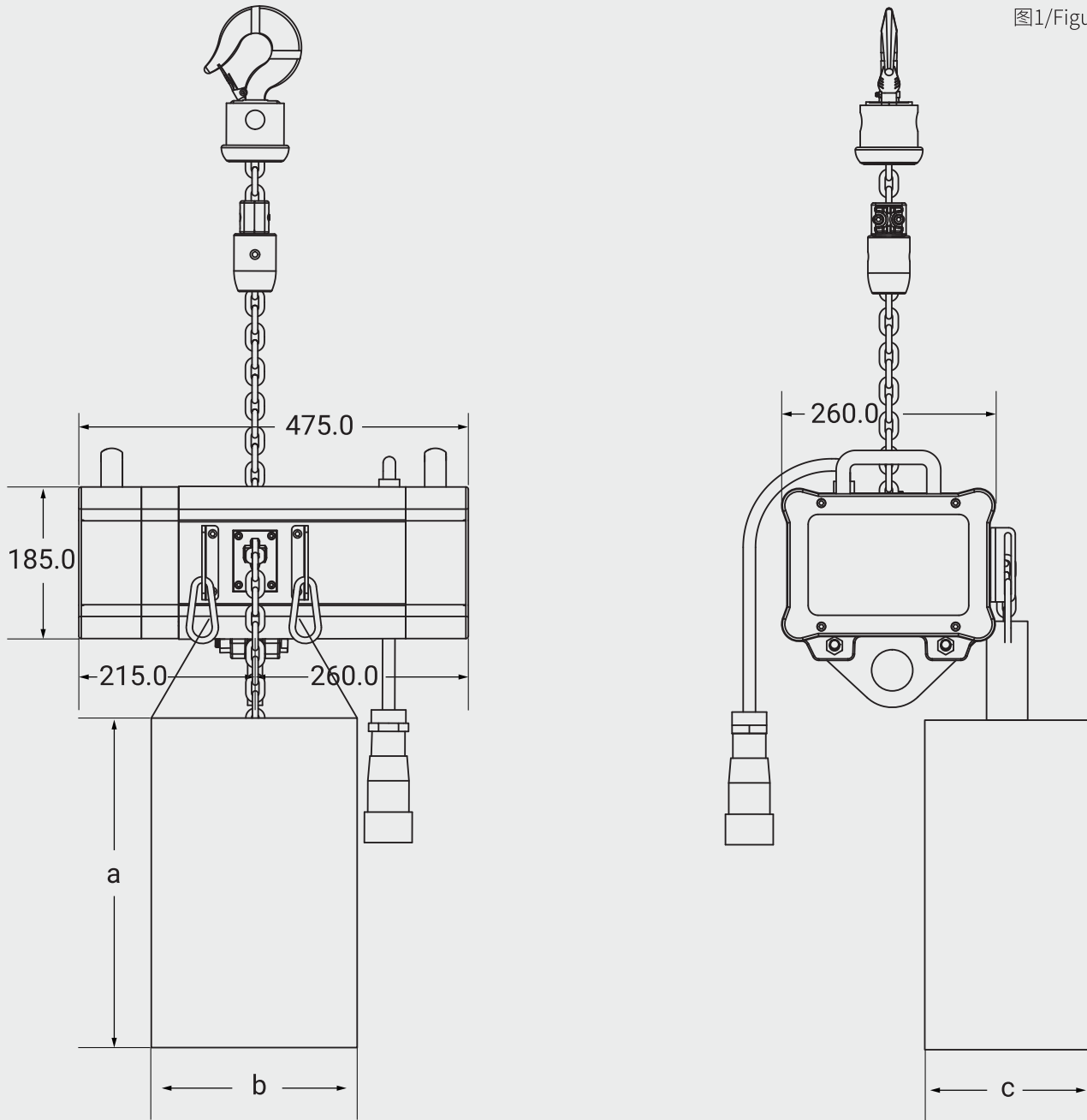
## OPTIONAL

- Chain, optional, G100 chain
- Suspension method, optional, hook (See Figure2, P6)

# ELECTRIC CHAIN HOIST SIZE

## 电动葫芦尺寸表

图1/Figure 1



注：单位mm/Note:Unit mm

链条袋规格/CHAIN BAG SPECIFICATION			
链条长度 CHAIN LENGTH(m)	链条袋尺寸/CHAIN BAG SIZE(mm)		
	a	b	c
10	200	250	180
20	250	250	180
30	350	250	180

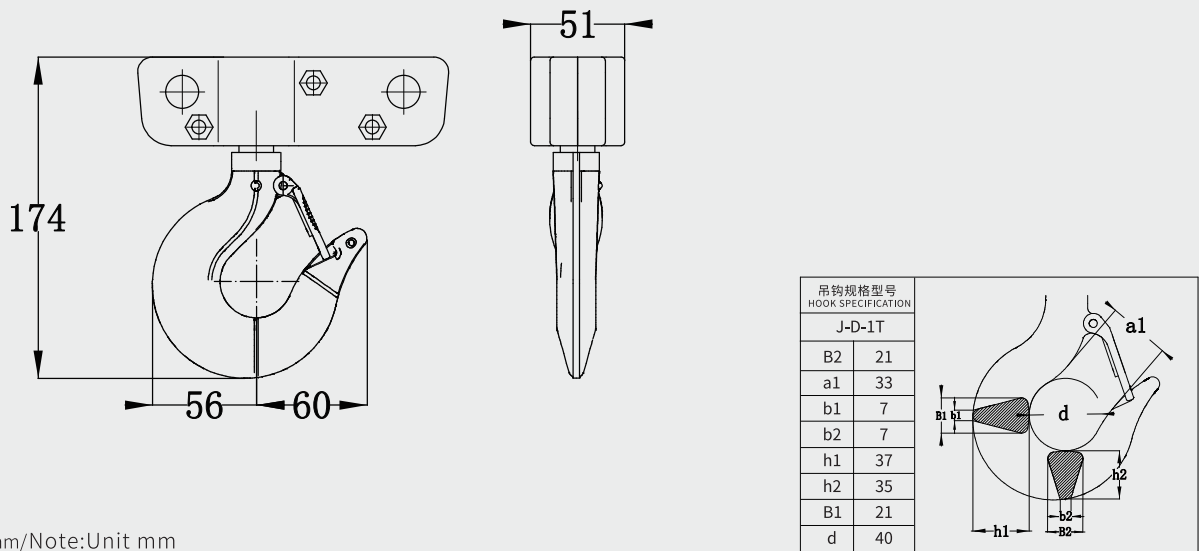
# OPTIONAL HOOK SUSPENSION ASSEMBLY

## 吊挂组件

配置1: 360°旋转吊钩悬挂组件

图2/Figure 2

Standard 1: 360° rotating hook suspension assembly

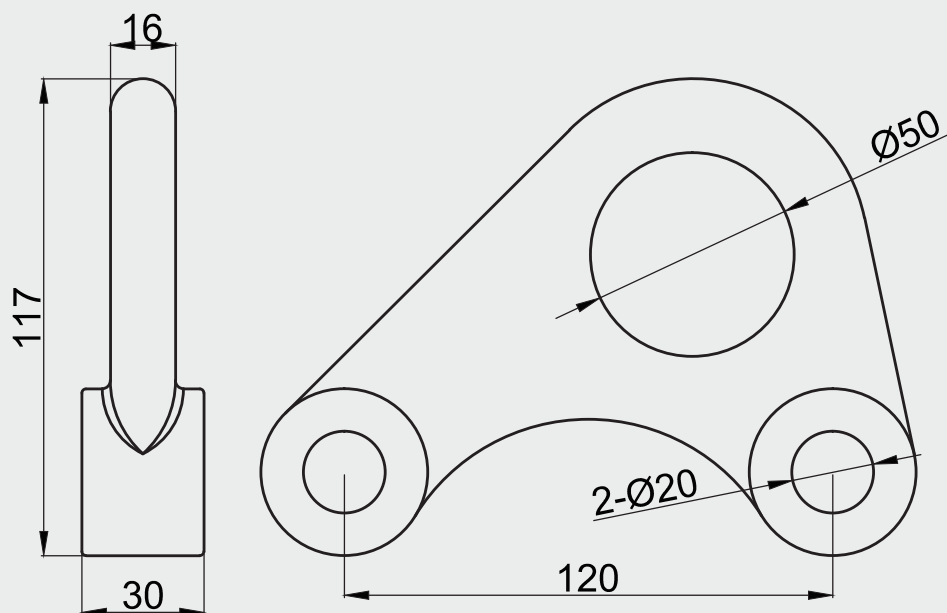


注: 单位mm/Note:Unit mm

配置2: 吊环组件

图3/Figure 3

Standard 2: Lifting ring assembly

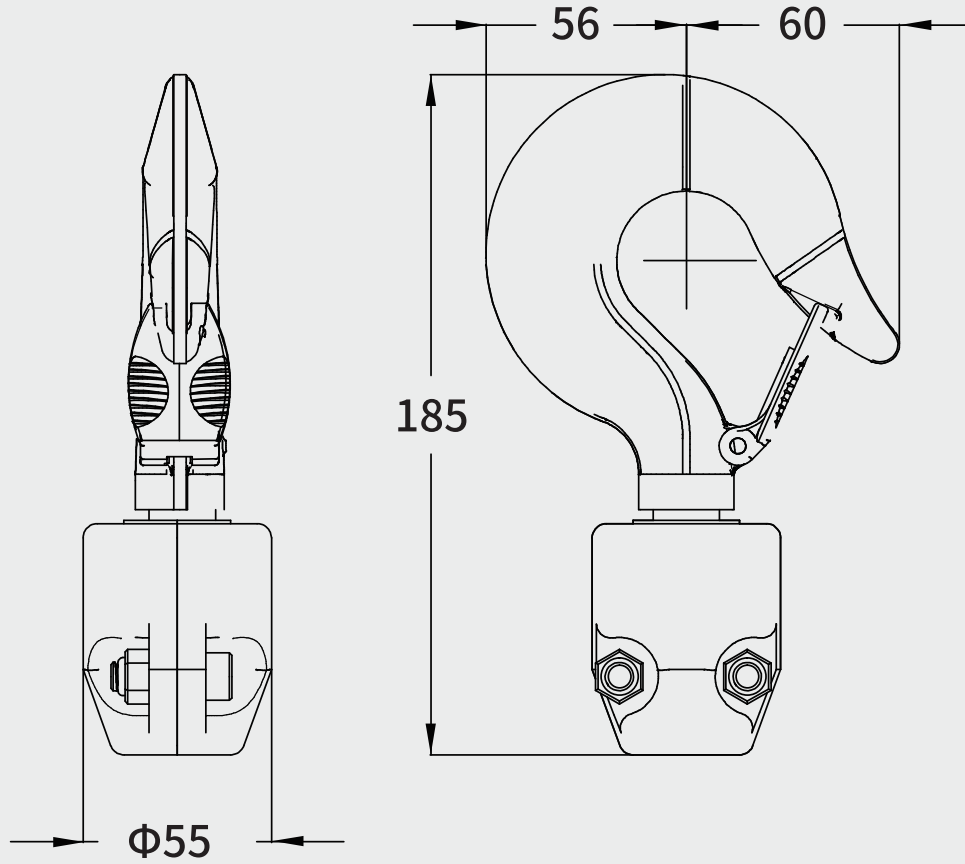


注: 单位mm/Note:Unit mm

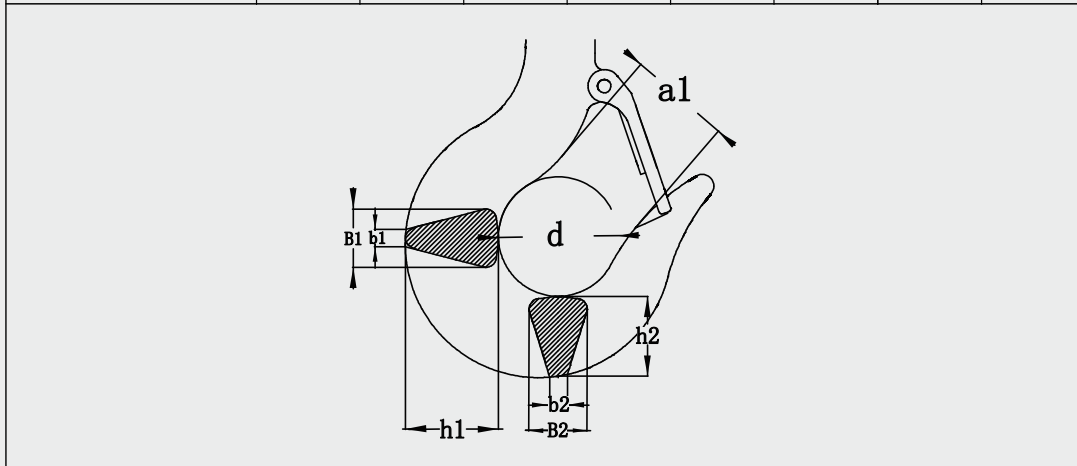
# HOOK ASSEMBLY

## 吊钩组件

图4/Figure 4



吊钩规格型号 HOOK SPECIFICATION	a1	b1	b2	d	h1	h2	B1	B2
J-D-1T	33	7	7	40	37	35	21	21

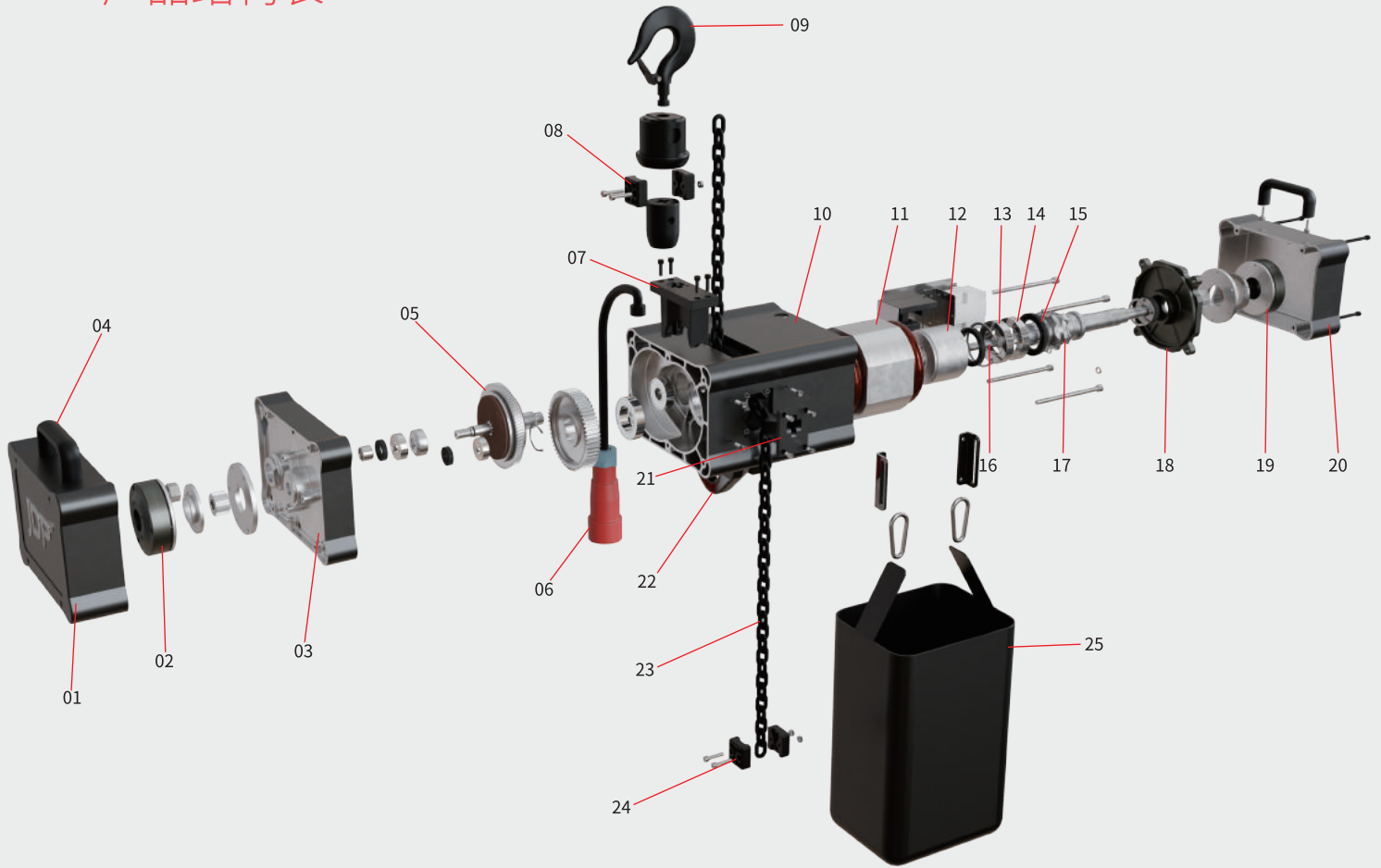


注：单位mm/Note:Unit mm



# PRODUCT STRUCTURE

## 产品结构表



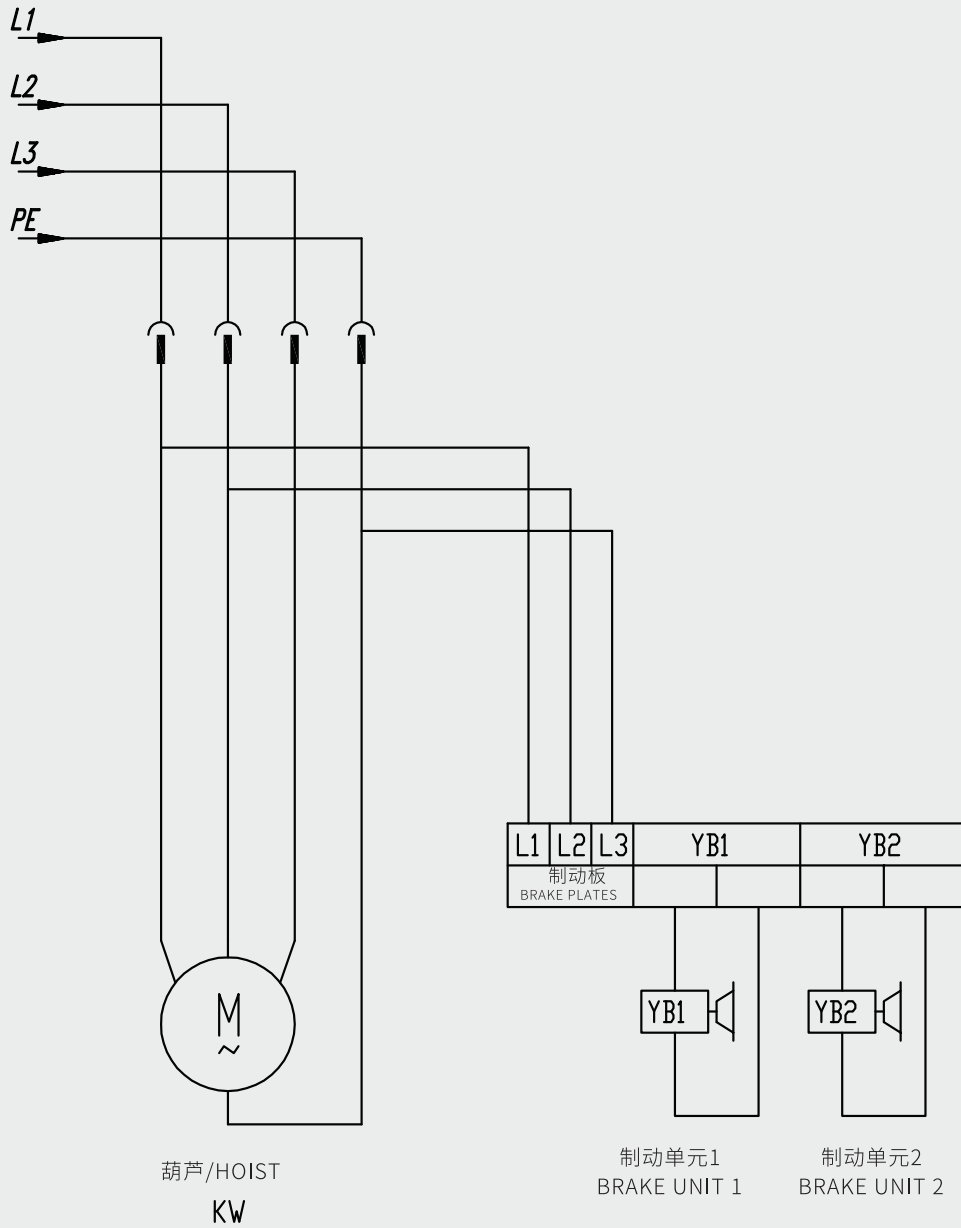
01: 电器盖	08: 下钩夹板	14: 轴承	20: 电机箱盖
02: 电磁刹车	09: 起重钩	15: 轴承固定圈	21: 侧出链器
03: 齿轮箱盖	10: 齿轮箱	16: 输出轴	22: 吊环
04: 提手	11: 电机定子	17: 起重链轮	23: 链条
05: 离合器	12: 转子	18: 刹车刷	24: 限位锁块
06: 航空插头	13: 轴承	19: 电磁刹车	25: 储链袋
07: 导链架			
01: electrical cover	08: under hook splint	14: bearing	20: motor box cover
02: electro-magnetic brake	09: hook of hoist	15: bearing retaining ring	21: side chain organizer
03: cover of gear box	10: gear box	16: output shaft	22: lifting ring
04: handle	11: motor stator	17: lifting sprocket	23: chain
05: clutch	12: rotor	18: brake cut	24: limit block
06: aviation plug	13: bearing	19: electro-magnetic brake	25: chain bag
07: chain guide bracket			

# ELECTRICAL WIRING DIAGRAM

## 电器线路图

高压直控-3Ph+PE/High voltage directly control-3Ph+PE

图5/Figure 5



注：不带限位/Note: without limit switch





[www.jdp.top](http://www.jdp.top)

+86 13315233723

Email: [admin@jdp.top](mailto:admin@jdp.top)

北京市海淀区金隅嘉华D座1005室

JDP China Drive Systems Co., Ltd